

SAMPLE REPORT

INFRARED INSPECTION REPORT

■ **Potential #** 1

■ **Route #** 001

■ **Date** 2/16/98

■ **Time** 8:49 a.m.

■ **Plant Location**

South 500KVA
Transformer Bank
Substation

■ **Equipment Description**

B Phase 500KVA Transformer
Secondary Bushing
TC# 14

■ **Description of Findings**

Defective bushing and/or loose
internal connection

■ **Temperature of Items in
Infrared Photo**

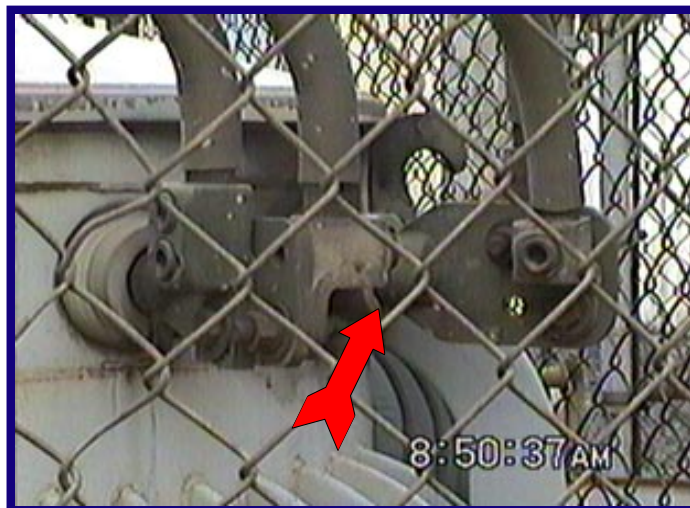
The A Phase = 38c
The B Phase = 62c
The C Phase = 37c
The Delta-T = 25c
Ambient = 18c

■ **Recommendations**

Inspect the bushing and
internal connections: Repair
or replace as required

■ **Repair Priority**

Critical Potential



■ **Thermographer** Infrared Dept.

■ **Repair Notes**

ACTS 4:12

SDMYERS

I N F R A R E D



SAMPLE REPORT

INFRARED INSPECTION REPORT

■ **Potential #** 2

■ **Route #** 009

■ **Date** 2/17/98

■ **Time** 8:41 a.m.

■ **Plant Location**

Distribution Warehouse
North Buss Line

■ **Equipment Description**

Buss Junction Box for the
302 Package Machine

■ **Description of Findings**

Suspect an internal problem

■ **Temperature of Items in Infrared Photo**

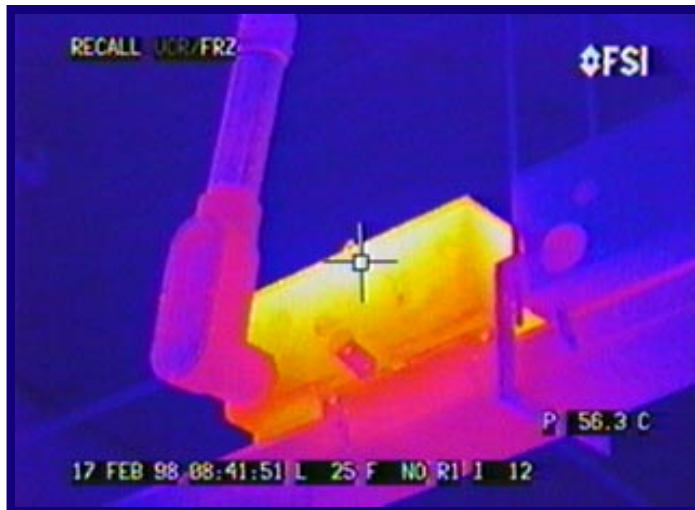
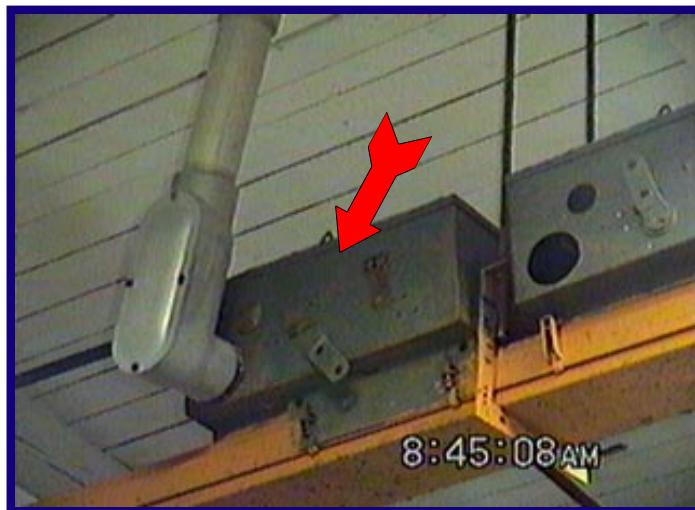
The Junction Box = 56c
Internal Temp is Unknown
Ambient = 21c
Rise Above Ambient = 35c

■ **Recommendations**

Inspect for cause of heating and
repair or relace as required

■ **Repair Priority**

Serious Potential



■ **Thermographer** Infrared Dept.

■ **Repair Notes**

ACTS 4:12

S D M Y E R S

I N F R A R E D



SAMPLE REPORT

INFRARED INSPECTION REPORT

■ **Potential #** 3

■ **Route #** 019

■ **Date** 2/17/98

■ **Time** 9:25 a.m.

■ **Plant Location**

North Air Compressor
Room

■ **Equipment Description**

Main Fused Disconnect for the
1 Air Compressor, C Phase,
Line Side, Contact Assembly

■ **Description of Findings**

Loose/deteriorated disconnect/
fuse component(s)

■ **Temperature of Items in
Infrared Photo**

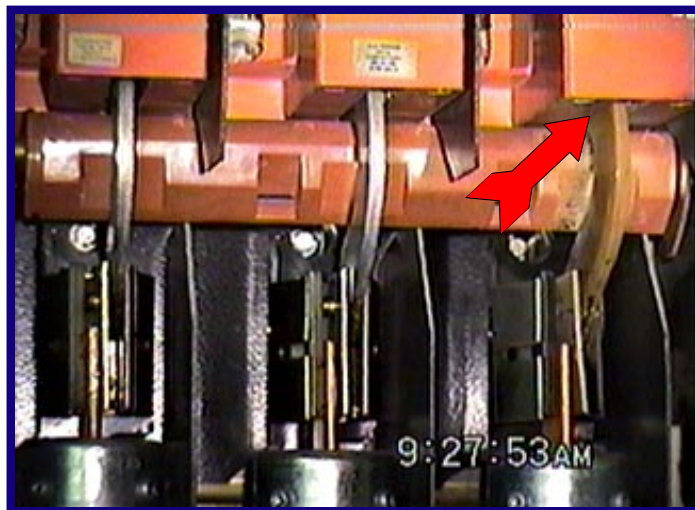
The A Phase = 32c
The B Phase = 32c
The C Phase = 66c
The Delta-T = 34c
Ambient = 22c

■ **Recommendations**

Clean, Align and tighten all
contacting/connecting points of
the disconnect assembly

■ **Repair Priority**

Intermediate Potential



■ **Thermographer** Infrared Dept.

■ **Repair Notes**

ACTS 4:12

S D M Y E R S

I N F R A R E D



SAMPLE REPORT

INFRARED INSPECTION REPORT

■ **Potential #** 4

■ **Route #** 040

■ **Date** 2/23/98

■ **Time** 12:29 p.m.

■ **Plant Location**

Department # 4652
Recoil & Sealing

■ **Equipment Description**

Control Panel for Mylar Seal
L-26 (MS-113), Fuse # FU3
Right Side

■ **Description of Findings**

Loose/deteriorated fuse clip,
blade, or jaw assembly

■ **Temperature of Items in Infrared Photo**

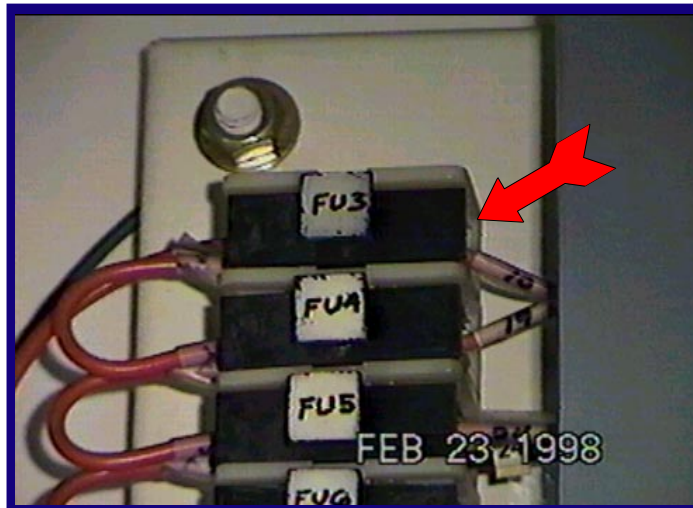
The Right Fuse Clip = 39c
The Left Fuse Clip = 26c
The Delta-T = 13c
Ambient = 21c

■ **Recommendations**

Replace the fuse clips

■ **Repair Priority**

Minor Potential



■ **Thermographer** Infrared Dept.

■ **Repair Notes**

ACTS 4:12

SDMYERS

I N F R A R E D



SAMPLE REPORT

INFRARED INSPECTION REPORT

■ **Potential #** 5

■ **Route #** 047

■ **Date** 3/3/98

■ **Time** 9:23 a.m.

■ **Plant Location**

Power House
Room

■ **Equipment Description**

Control Panel for Cooling Tower,
Line # 1 - Pump P-911A
Main Breaker, Line Side,
A Phase

■ **Description of Findings**

Loose/deteriorated connections

■ **Temperature of Items in Infrared Photo**

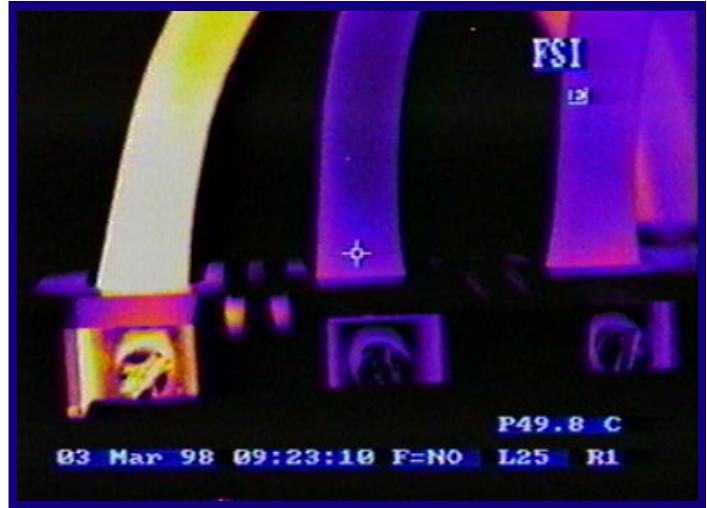
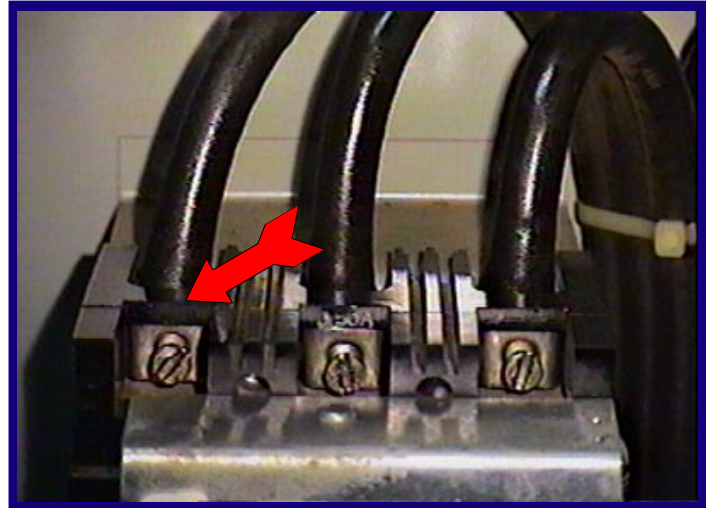
The A Phase = 50c
The B Phase = 29c
The C Phase = 29c
The Delta-T = 21c
Ambient = 14c

■ **Recommendations**

Check for dead wire (Oxide buildup between strands) and cut back cable if required: Clean and tighten the connection

■ **Repair Priority**

Intermediate Potential



■ **Thermographer** Infrared Dept.

■ **Repair Notes**

ACTS 4:12

S D M Y E R S

I N F R A R E D

